

Cyclin B1 Antibody
Rabbit mAb
Catalog # AP90534**Specification**

Cyclin B1 Antibody - Product Information

Application	WB, IHC, FC, ICC
Primary Accession	P14635
Clonality	Monoclonal
Other Names	
CCN-2; CCNB; CCNB1; CCNB1-RS1; CYCB; CYCB1; G2/mitotic-specific cyclin B1;	
Isotype	Rabbit IgG
Host	Rabbit
Calculated MW	48337 Da

Cyclin B1 Antibody - Additional Information

Dilution	WB~~1:1000 IHC~~1:100~500 FC~~1:10~50 ICC~~N/A
Purification	Affinity-chromatography
Immunogen	A synthesized peptide derived from human Cyclin B1
Description	Cyclins are a family of proteins that activate specific cyclin-dependent kinases required for progression through the cell cycle. The entry of all eukaryotic cells into mitosis is regulated by activation of cdc2/cdk1 at the G2/M transition. This activation is a multi-step process that begins with the binding of the regulatory subunit, cyclin B1, to cdc2/cdk1 to form the mitosis-promoting factor (MPF).
Storage Condition and Buffer	Rabbit IgG in phosphate buffered saline , pH 7.4, 150mM NaCl, 0.02% sodium azide and 50% glycerol. Store at +4°C short term. Store at -20°C long term. Avoid freeze / thaw cycle.

Cyclin B1 Antibody - Protein Information**Name** CCNB1**Synonyms** CCNB**Function**

Essential for the control of the cell cycle at the G2/M (mitosis) transition.

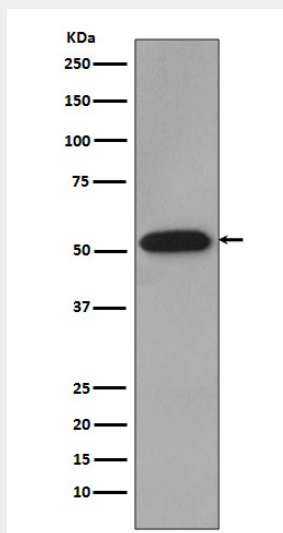
Cellular Location

Cytoplasm. Nucleus. Cytoplasm, cytoskeleton, microtubule organizing center, centrosome

Cyclin B1 Antibody - Protocols

Provided below are standard protocols that you may find useful for product applications.

- [Western Blot](#)
- [Blocking Peptides](#)
- [Dot Blot](#)
- [Immunohistochemistry](#)
- [Immunofluorescence](#)
- [Immunoprecipitation](#)
- [Flow Cytometry](#)
- [Cell Culture](#)

Cyclin B1 Antibody - Images

Western blot analysis of Cyclin B1 expression in HeLa cell lysate.